

DEPARTMENT OF THE ARMY TECHNICAL MANUAL

**ORGANIZATIONAL, DIRECT SUPPORT, AND GENERAL
SUPPORT MAINTENANCE REPAIR PARTS AND SPECIAL
TOOLS LISTS (INCLUDING DEPOT MAINTENANCE
REPAIR PARTS AND SPECIAL TOOLS)
AMPLIFIER, RADIO FREQUENCY AM-3495/U
(FSN 6625-985-8891)**

**Headquarters, Department of the Army, Washington, DC
14 March 1975**

Current as of December 1974

	Paragraph	Page
SECTION I. INTRODUCTION		
Scope	1-1	2
General	1-2	2
Explanation of columns	1-3	2
Special information	1-4	4
Location of repair parts	1-5	4
Abbreviations (Not applicable)	1-6	5
Reporting of equipment publication improvements	1-7	5
II. PRESCRIBED LOAD ALLOWANCE (Not applicable)		
III. REPAIR PARTS LIST		6
IV. SPECIAL TOOLS TEST AND SUPPORT EQUIPMENT (Not applicable)		
V. REPAIR PARTS LIST		7
VI. SPECIAL TOOLS TEST AND SUPPORT EQUIPMENT (Not applicable)		
VII. INDEX-FEDERAL STOCK NUMBER AND REFERENCE NUMBER GROSS-REFERENCE TO FIGURE AND ITEM NUMBER		15

*This manual supersedes so much of TM 11-6625-635-12, 15 July 1965, including all changes, as pertains to organizational repair parts list and TM 11-6625-635-45P, 13 April 1966.

SECTION I
INTRODUCTION

1-1. Scope

This manual lists repair parts and special tools required for the performance of organizational, direct support, general support, and depot maintenance of the AM-3495 U. The PCCN for the AM-3495 U is GCRAFR for all models.

1-2. General

This repair parts and special tools list is divided into the following sections:

a. *Prescribed Load Allowance (PLA) - Section II. Not applicable.*

b. *Repair Parts List - Section III.* A list of repair parts authorized for the performance of maintenance at the organizational level. This repair parts list is arranged in alphabetical order.

c. *Special Tools, Test and Support Equipment - Section IV.* Not applicable.

d. *Repair Parts List - Section V.* A list of repair parts authorized for the performance of maintenance at the direct support, general support, and depot level.

e. *Special Tools, Test and Support Equipment - Section VI.* Not applicable.

f. *Index-Federal Stock Number and Reference number Cross-Reference to Figure and Item Number - Section VII.* A list, in ascending numerical sequence, of all Federal stock numbers appearing in the listings, followed by a list, in alphameric sequence, of all reference numbers appearing in the listings. Federal stock number and reference numbers are cross-referenced to each illustration figure and item number or reference designation appearance.

1-3. Explanation of Columns

The following provides an explanation of columns found in the tabular list.

a. Source, Maintenance, and Recoverability Codes (SMR).

(1) Source code. Indicates the manner of acquiring support items for maintenance, repair, or overhaul of end items. Source codes are:

Code	Explanation
------	-------------

P A - Item procured and stocked for anticipated or known usage.

P B - Item procured and stocked for insurance purposes because essentiality dictates that a minimum quantity be available in the supply systems.

<i>Code</i>	<i>Explanation</i>
P C -	Item procured and stocked and which otherwise would be coded PA except that it is deteriorative in nature.
P D -	Support item, excluding support equipment procured for initial issue or outfitting and stocked only for subsequent or additional initial issues or outfittings. Not subject to automatic replenishment.
P E -	Support equipment procured and stocked for initial issue or outfitting to specified maintenance repair activities.
P F -	Support equipment which will not be stocked but which will be centrally procured or demand.
P G -	Item procured and stocked to provide for sustained support for the life of the equipment. It is applied to an item peculiar to the equipment which because of probable discontinuance or shutdown of production facilities would prove uneconomical to reproduce at a later time.
K D -	An item of depot overhaul/repair kit and not purchased separately. Depot kit defined as a kit that provides items required at the time of overhaul or repair.
K F -	An item of a maintenance kit and not purchased separately. Maintenance kit defined as a kit that provides an item that can be replaced at organizational or direct support or general support levels of maintenance.
K B -	Item included in both a depot overhaul/repair kit and a maintenance kit.
M O -	Item to be manufactured or fabricated at organizational level.
M F -	Item to be manufactured or fabricated at direct support maintenance level.
M H -	Item to be manufactured or fabricated at general support maintenance level.
M D -	Item to be manufactured or fabricated at depot maintenance level.
X O -	Item to be assembled at organizational level
A F -	Item to be assembled at direct support maintenance level.
A H -	Item to be assembled at general support maintenance level.
A D -	Item to be assembled at depot maintenance level.
X A -	Item is not procured or stocked because the

Code	Explanation
	requirements for the item will result in the replacement of the next higher assembly.
XB	Item is not procured or stocked. If not available through salvage, requisition.
XC	Installation drawing, diagram instruction sheet, field service drawing, that is identified by manufacturers' part number.
XD	Support items can be requisitioned with justification.

NOTE

Cannibalization or salvage may be used as a source of supply for any items source coded above except those coded XA and aircraft support items as restricted by AR 700-42.

(2) **Maintenance code.** Maintenance codes are assigned to indicate the levels of maintenance authorized to USE and REPAIR support items. The maintenance codes are entered in the third and fourth positions of the Uniform SMR Code format as follows:

(a) Use (third position). The maintenance code entered in the third position indicates the lowest maintenance level authorized to remove, replace, and use the support item. The maintenance code entered in the third position indicates one of the following levels of maintenance.

Code	Application/Explanation
O	Support item is removed, replaced, used at the organizational level of maintenance.

NOTE

A code "C" may be used in this position to denote crew or operator maintenance performed within organizational maintenance.

F	Support item is removed, replaced, used at the direct support maintenance level.
H	Support item is removed, replaced, used at the general support maintenance.
D	Support items that are removed, replaced, used at depot only.

(b) Repair (fourth position). The maintenance code entered in the fourth position indicates whether the item is to be repaired and identifies the lowest maintenance level with the capability to perform complete repair (i.e., all authorized maintenance functions). When a maintenance code is not used a dash (-) sign is entered. For multi-service equipment/systems or when a code is entered, this position will contain one of the following maintenance codes as assigned by the service(s) that require the code:

Code	Application/Explanation
O	The lowest maintenance level capable of complete repair of the support item is the organizational level.
F	The lowest maintenance level capable of complete repair of the support item is direct support.
H	The lowest maintenance level capable of complete repair of the support item is general support.
D	The lowest maintenance level capable of complete repair of the support item is the depot level.
E	Repair restricted to designated Specialized Repair Activity.
Z	Non-repairable, No repair is authorized.
B	No repair is authorized. The item may be reconditioned by adjusting, lubricating, etc., at the user level. No parts or special tools are procured for the maintenance of this item.

(3) Recoverability code. Recoverability codes are assigned to support items to indicate the disposition action on unserviceable items. The recoverability code is entered in the fifth position of the uniform SMR Code format as follows:

Code	Explanation
Z	Nonrepairable item. When unserviceable, condemn and dispose at the level indicated in the first digit of the maintenance code.
O	Repairable item. When uneconomically repairable, condemn and dispose at organizational level.
F	Repairable item. When uneconomically repairable, condemn and dispose at the direct support level.
H	Repairable item. When uneconomically repairable, condemn and dispose at the general support level.
D	Repairable item. When beyond lower level repair capability, return to depot. Condemnation and disposal not authorized below depot level.
IA	Repairable item. Repair, condemnation, and disposal not authorized below depot/Specialized Repair Activity level.
A	Item requires special handling or condemnation procedures because of specific reasons (i.e., precious metal content, high dollar value, critical material or hazardous material).

b. Federal Stock Number. Indicates the Federal stock number assigned to the item.

NOTE

For requisitioning purposes, the Federal stock number must be converted to the National stock by adding “-00-” after the Federal stock classification (FSC) code (first four digits). For example, FSN 6625-553-0142 converts to NSN 6625-00-553-0142.

c. Description. Indicates the Federal item name and a minimum description required to identify the item. The last line indicates the reference number followed by the applicable Federal Supply Code for Manufacturer (FSCM) in parentheses. The FSCM is used as an element in item identification to designate manufacturer or distributor or Government agency, etc., and is identified in SB 708-42.

d. Unit of Measure (UM). Indicates the standard or basic quantity by which the listed item is used in performing the actual maintenance function. This measure is expressed by a two-character alphabetical abbreviations; e.g., ea, in, pr, etc., and is the basis used to indicate quantities and allowances in subsequent columns. When the unit of measure differs from the unit of issue, the lowest unit of issue that will satisfy the required units of measure will be requisitioned.

e. Quantity Incorporated in Unit. This column indicates the quantity of the item used in the equipment. Subsequent appearances of the same item in the same assembly are indicated by the letters “REF”.

f. 15-Day Organizational Maintenance Allowances.

(1) The repair parts indicated by an asterisk in the allowance column represent those authorized for use at the organizational category, and will be requisitioned on an “as required” basis, until stockage is based on demand in accordance with AR 710-2.

(2) Major Army commanders are authorized to approve reduction in the range of support items authorized for use in units within their commands. Recommendations for increase in range of items authorized for use will be forwarded to Commander, US Army Electronics Command, ATTN: AMSEL-MA-CR, Fort Monmouth, NJ 07703.

(3) Allowance quantities are indicated in the special tools list section for special tools, TMDE, and other support equipment.

g. 30-Day DS/GC Maintenance Allowances.

NOTE

Allowances in GS column are for GS maintenance only.

(1) The repair parts indicated by asterisk entries in separate allowance columns for DS and GS

represent those authorized for use at that category of maintenance to be requisitioned on an “as required” basis, until stockage is based on demand in accordance with AR 710-2.

(2) Allowance quantities are indicated in the special tool lists section for special tools, TMDE, and other support equipment.

h. 1-Year Allowances Per 100 Equipments/Contingency Planning Purposes. Column intentionally left blank.

i. Depot Maintenance Allowance Per 100 Equipments. This column indicates opposite the first appearance of each item the total quantity authorized for depot maintenance of 100 equipments.

j. Illustration.

(1) **Figure number.** Indicates the figure number of the illustration on which the item is shown in TM 11-6625-635-45.

(2) **Item number.** Indicates the item number or reference designation used to reference the item in the illustration.

1-4. Special Information

a. Usable on codes are included in column 3. **Uncolored items are applicable to all models. Identification of the usable on codes used in this publication are:**

Code	Used on
A 5 B	AM-3495/U

b. The following publications pertain to the AM-3495/U and its components:

TM 11-6625-635-12 Organizational Maintenance Manual Including Repair Parts and Special Tool Lists: Amplifier, Radio Frequency AM-3495/u.

TM 11-6625635-45 GS and Depot Maintenance Manual: Amplifier, Radio Frequency AM-3495/U.

1-5. Location of Repair Parts

a. This manual contains one cross-reference index (sec VII) to be used to locate a repair part when either the Federal stock number or reference number (manufacturer’s part number) is known. The first column in the index is prepared in numerical or alphanumeric sequence in ascending order. The reference numbers (manufacturer’s part numbers) are listed immediately following the last listed Federal stock number in the index of Federal stock numbers.

b. When the Federal stock number or reference number is known, follow the procedures given in (1) and (2) below.

(1) Refer to the index of Federal stock numbers (see VII), and locate the Federal stock number or reference number. The FSN and reference number are cross-referenced to the applicable figure and item number or reference designation.

(2) Refer to the repair parts list (see III and V) and locate the figure number (col 7a — 20P, 10a — 34P) and item number or reference designation (col 7b — 20P, 10b — 34P) as noted in the FSN index.

c. When the figure and item number or reference designation are known, scrutinize columns 7a and 7b — 20P and 10a and 10b — 34P, of the repair parts list (see III and V) until the item is located.

d. When the FSN, reference number, figure number, and item number are not known, scrutinize

column 3 of the repair parts list (see III and V), which is arranged in alphabetical order.

1-6. Abbreviations

Not applicable.

1-7. Reporting of Equipment Publication Improvements

The reporting of errors, omissions, and recommendations for improving this publication by the individual user is encouraged. Reports should be submitted on DA Form 2028 (Recommended Changes to Publications and Blank Forms) and forwarded direct to Commander, US Army Electronics Command, ATTN: AMSEL-MA-CR, Fort Monmouth, NJ 07703.

SECTION III

TM 11-6625-635-24P

(1) SIR CODE	(2) FEDERAL STOCK NUMBER	(3) DESCRIPTION REFERENCE NUMBER & MFR CODE USABLE ON CODE	(4) UNIT OF MEAS	(5) QTY. INC IN UNIT	(6) 15-DAY ORGANIZATIONAL MAINTENANCE ALV				(7) ILLUSTRATION	
					(a)	(b)	(c)	(d)	(a)	(b)
					1-5	6-20	21-50	51-100	FIGURE NO.	ITER NO.
ED02Z	5920-284-7734	COVER, DUST NO-REF-DESIG.....	EA	1	*	*	*	*		
PAJZZ		FUSE, CARTRIDGE F1 0.6 AMP, 115 V, SLO-SLO..... 313-600 (75915)	EA	1	*	*	*	*	2-1	F1

(1) SMR CODE	(2) FEDERAL STOCK NUMBER	(3) DESCRIPTION REFERENCE NUMBER & MFR. CODE USABLE ON CODE	(4) UNIT OF MEAS	(5) QTY INC IN UNIT	(6) 30-DAY DS MAINT ALLOWANCE			(7) 30-DAY GS MAINT ALLOWANCE			(8) 1-YR ALW PER 100 EQUIP CNTGTY	(9) DEPOT MAINT ALW PER 100 EQUIP	(10) ILLUSTRATION	
					(a)	(b)	(c)	(a)	(b)	(c)			(a)	(b)
					1-20	21-50	51-100	1-20	21-50	51-100			FIGURE NO.	ITEM NO.
XDDZZ		COVER, DUST NO-REF-DESIG..... 46A1C (28463)	EA	1	*	*	*	*	*	*				
XBDZZ		SCREW, SELF-TAPING NO-REF-DESIG NO. 6... SIZE 1/2 IN LG TYPE EZ8X1-2 (73736)	EA	4										
XBDZZ		NUT, SHEET SPRING NO-REF-DESIG NO 8 SIZE 1/2 IN JC1805-873 (78553)	EA	4										
PAHZZ	59360-262-1357	ELECTRON, TUBE V1..... 5654-6AK5W (81349)	EA	12				*	*	*		100	2-1	V1
PAHZZ	5960-262-1357	ELECTRON, TUBE V2..... 5654-6AK5W (81349)	EA	REF				*	*	*		100	2-1	V2
PAHZZ	5960-262-1357	ELECTRON, TUBE V3..... 5654-6AK5W (81349)	EA	REF				*	*	*		100	2-1	V3
PAHZZ	5960-262-1357	ELECTRON, TUBE V4..... 5654-6AK5W (81349)	EA	REF				*	*	*		100	2-1	V4
PAHZZ	5960-202-157	ELECTRON, TUBE V5..... 5654-6AK5W (81349)	EA	REF				*	*	*		100	2-1	V5
PAHZZ	5960-262-1357	ELECTRON, TUBE V6..... 5654-6AK5W (81349)	EA	REF				*	*	*		100	2-1	V6
PAHZZ	5960-262-1357	ELECTRON, TUBE V7..... 5654-6AK5W (81349)	EA	REF				*	*	*		100	2-1	V7
PAHZZ	5960-262-1357	ELECTRON, TUBE V8..... 5654-6AK5W (81349)	EA	REF				*	*	*		100	2-1	V8
PAHZZ	5960-262-1357	ELECTRON, TUBE V9..... 5654-6AK5W (81349)	EA	REF				*	*	*		100	2-1	V9
PAHZZ	5960-262-1357	ELECTRON, TUBE V10..... 5654-6AK5W (81349)	EA	REF				*	*	*		100	2-1	V10
PAHZZ	5960-262-1357	ELECTRON, TUBE V11..... 5654-6AK5W (81349)	EA	REF				*	*	*		100	2-1	V11
PAHZZ	5960-262-1357	ELECTRON, TUBE V12..... 5654-6AK5W (81349)	EA	REF				*	*	*		100	2-1	V12
PAHZZ	5935-331-1482	CONNECTOR, RECEPTACLE, ELECTRICAL J1..... PANEL JACK 46A76 (28480)	EA	2				*	*	*		3	2-1	J1
PAHZZ	5935-331-1482	CONNECTOR, RECEPTACLE, ELECTRICAL J2..... PANEL JACK 46A76 (28480)	EA	REF				*	*	*		3	2-1	J2
XDDZZ		PLATE, NUT NO-REF-DESIG PLATE, PANEL.... JACK, SQUARE 1-3/8 IN X 1-3/8 IN X 3/16 IN 46A76A1 (28480)	EA	2										
XBDZZ		SCREW, MACHINE NO-REF-DESIG NO. 6-32 THD 1/2 IN LG PHILLIPS HEAD 2360-0007 (81053)	EA	13										
XDDZZ		WASHER NO-REF-DESIG FIBRE, FLAT, 69/64.. IN X 1/4 IN 3050-0023 (28480)	EA	8										
XDHZZ		KNOB NO-REF-DESIG ROUND 3/4 IN LG X 1- 3/8 IN DIA O/A 0370-0032 (28480)	EA	1				*	*	*				
PAHZZ	5905-660-6445	RESISTOR, VARIABLE, WIRE WOUND R22 50... CONTINUED	EA	1				*	*	*		3	2-1	R22

SMR CODE	FEDERAL STOCK NUMBER	DESCRIPTION REFERENCE NUMBER & MFR. CODE USABLE CN CODE	UNIT OF MEAS	QTY IN UNIT	30-DAY DS MAINT ALLOWANCE			30-DAY GS MAINT ALLOWANCE			1-YR ALW PER 100 EQUIP CNTGCT	DEPOT MAINT ALW PER 100 EQUIP	ILLUSTRATION	
					(a)	(b)	(c)	(a)	(b)	(c)			(c)	(b)
					1-20	21-50	51-100	1-20	21-50	51-100			FIGURE NO.	ITEM NO.
		CONTINUED												
PAHZZ	5920-881-4630	UHMS FORMLOPCT 3W K430NASUSQUA (81349) FUSEHOLDER XFL.....	EA	1				*	*	*		3		XFL
PAZZZ	5920-284-7734	342014 (75915) FUSE, CARTRIDGE FL 0.6 AMP, 115 V, SLU- BLU	EA	1	*	*	*	*	*	*		5	2-1	FL
PAZZZ	5330-582-3319	311-600 (75915) WASHER, METALLIC NO-REF-DESIG P/O FUSE.. HOLDER	EA	1								5		
XDDZZ		901-2 (75915) NUT, HEX NO-REF-DESIG P/O FUSE HOLDER...	EA	1										
PAHZZ	5930-729-8375	903-12 (75915) SWITCH, TUGGLE S1 SPST.....	EA	1				*	*	*		5	2-1	SA
PAZZZ	5930-231-1491	80994H (U4009) SWITCH RING NO-REF-DESIG P/O TOGGLE..... SWITCH	EA	1								5		
PAZZZ	5310-454-1335	20994H (U4009) NUT, HEXAGON NO-REF-DESIG P/O SWITCH....	EA	1								3		
PAHZZ	6240-617-1468	2950-0035 (28480) LAMP, INCANDESCENT 11 6 TC 8 V, 2 PIN... BASE	EA	1				*	*	*		20	2-1	11
XDHZZ		12 (24446) LAMPHOLDER X11.....	FA	1				*	*	*				X11
PAHZZ	6210-729-9081	2020AE (72765) LENS NO-REF-DESIG P/O LAMP HOLDER.....	EA	1				*	*	*		5		
MDDZZ		141113 (72765) PANEL, FRONT NO-REF-DESIG.....		1										
XDYZZ		46AZ (28480) SCREW, MACHINE NO-REF-DESIG NO 8-32 THD. 1/2 IN LG PHILLIPS	EA	8										
XDYZZ		AN515CR4 (88044) WASHER, LOCK NO-REF-DESIG NO 6 INTERNAL. LOCK	EA	6										
XDDZZ		AN936A68 (88044) NUT, HEXAGON NO-REF-DESIG NO 8-32 THD... 11/32 IN THK	EA	4										
PAZZZ	5310-687-7337	MS35649-82 (96906) NUT, HEXAGON NO-REF-DESIG NO. 6-32 X.... 5/16 IN THK	EA	5								3		
PAHZZ	5995-921-3280	510-061810-01 (78189) CABLE ASSEMBLY, POWER W1.....	EA	1				*	*	*				W1
XDDZZ		KH4096 (70903) MOUNTING, PLATE NO-REF-DESIG FOR TUBE...	EA	1										
XDDZZ		SOCKETS BAKELITE 3-1/4 IN H X 15-5/16 IN LG X 3/16 IN THK		4										
XDDZZ		46A4 (28480) SPACER, SLEEVE NO-REF-DESIG STEEL, 1.625 IN LG X 0.250 IN DIA	EA	4										
XBDZZ		46A47 (28480) SCREW, MACHINE NO-REF-DESIG.....	EA	4										
		2590-0002 (70276)												

SECTION V

TM 11-6625-635-24P

(1) SWR CODE	(2) FEDERAL STOCK NUMBER	(3) DESCRIPTION REFERENCE NUMBER & MFR. CODE USABLE ON CODE	(4) UNIT OF MEAS	(5) QTY INC IN UNIT	(6) 30-DAY DS MAINT ALLOWANCE			(7) 30-DAY CS MAINT ALLOWANCE			(8) 1 YR ALW PER 100 EQUIP CNTGCT	(9) DEPOT MAINT ALW PER 100 EQUIP	(10) ILLUSTRATION	
					(a)	(b)	(c)	(a)	(b)	(c)			(a)	(b)
					1-20	21-50	51-100	1-20	21-50	51-100			FIGURE NO	ITEM NO
XDZZ		WASHER, FLAT NLI-REF-DESIG AC. 8 X 7/10 O/A 3050-0071 (28480)	EA	4										
ABZZ		WASHER, LOCK NLI-REF-DESIG 2146-0009 (28480)	EA	4										
XBZZ		PLATE, SOCKET NO-REF-DESIG 46A47A (28480)	EA	1										
XDZZ		PLATE, ELECTRICAL SHIELD NO-REF-DESIG 46A6A (28480)	EA	1										
XDZZ		PLATE, ELECTRICAL SHIELD NO-REF-DESIG SMALL 46A68 (28480)	EA	1										
XDZZ		TERMINAL, BOARD NO-REF-DESIG TIE POINTS 1 332-11-02-002 (71785)	EA	4				*	*	*				
XDZZ		TERMINAL, BOARD NO-REF-DESIG TIE POINTS 3 332-14-03-011 (71785)	EA	1				*	*	*				
XDZZ		COIL ASSEMBLY, RADIO FREQUENCY L1 5.500 LN LG X .8125 IN O/A C/O 5 EA COILS 1 EA MOUNTING 2 TERMINAL LUGS 46A95L (28480)	EA	1				*	*	*			2-1	L1
XDZZ		COIL ASSEMBLY, RADIO FREQUENCY L2 5.500 IN LG X .8125 IN O/A C/O 5 EA COILS 1 EA MOUNTING 2 TERMINAL LUGS 46A95L (28480)	EA	REF				*	*	*			2-1	L2
XDZZ		COIL ASSEMBLY, RADIO FREQUENCY L3 5.500 IN LG X .8125 IN O/A C/O 5 EA COILS 1 EA MOUNTING 2 TERMINAL LUGS 46A95L (28480)	EA	REF				*	*	*			2-1	L3
XDZZ		COIL ASSEMBLY, RADIO FREQUENCY L4 5.500 IN LG X .8125 IN O/A C/O 5 EA COILS 1 EA MOUNTING 2 TERMINAL LUGS 46A95L (28480)	EA	REF				*	*	*			2-1	L4
XDZZ		COIL ASSEMBLY, RADIO FREQUENCY L5 5.500 IN LG X .8125 IN O/A C/O 5 EA COILS 1 EA MOUNTING 2 TERMINAL LUGS 46A95L (28480)	EA	REF				*	*	*			2-1	L5
XDZZ		COIL ASSEMBLY, RADIO FREQUENCY L6 5.3437 IN LG X 0.8125 IN C/O 5 EA COILS, 1 EA MOUNTING BOARD, 2 EA TERMINAL LUG 46A95N (28480)	EA	1				*	*	*			2-1	L6
XDZZ		COIL ASSEMBLY, RADIO FREQUENCY L7 5.437 IN LG X 0.8125 IN W C/O 5 EA COILS, 1 EA MOUNTING BOARD, 2 EA TERMINAL LUG 46A95N (28480)	EA	REF				*	*	*			2-1	L7
XDZZ		COIL ASSEMBLY, RADIO FREQUENCY L8 5.437 IN LG X 0.8125 IN W C/O 5 EA COILS, 1 EA MOUNTING BOARD, 2 EA TERMINAL LUG 46A95N (28480)	EA	REF				*	*	*			2-1	L8
XDZZ		COIL ASSEMBLY, RADIO FREQUENCY L9 5.437 IN LG X 0.8125 IN W C/O 5 EA COILS, 1 EA CONTINUED	EA	REF				*	*	*			2-1	L9

(1) SMR CODE	(2) FEDERAL STOCK NUMBER	(3) DESCRIPTION REFERENCE NUMBER & MFG CODE USABLE ON CODE	(4) UNIT OF MEAS	(5) QTY INC IN UNIT	(6) 30-DAY D5 MAINT ALLOWANCE			(7) 30-DAY G5 MAINT ALLOWANCE			(8) 1-YR ALW PER 100 EQUIP CNTGCT	(9) DEPOT MAINT ALW PER 100 EQUIP	(10) ILLUSTRATION	
					(a)	(b)	(c)	(a)	(b)	(c)			(a)	(b)
					1-20	21-50	51-100	1-20	21-50	51-100			FIGURE NO.	ITEM NO.
		CONTINUED												
XDHZZ		MOUNTING BOARD, 2 EA TERMINAL LUG 46A95N (28480)	EA	REF				*	*	*			2-1	L10
XDHZZ		COIL ASSEMBLY, RADIO FREQUENCY L10 5.437 IN LG X 0.8125 IN W C/O 5 EA COILS, 1 EA MOUNTING BOARD 2 EA TERMINAL LUG 46A95N (28480)	EA	1				*	*	*			2-1	L11
XDHZZ		COIL ASSEMBLY, RADIO FREQUENCY L11 7.562 IN LG X 0.8125 IN O/A C/O 7 EA COILS, 1 EA MOUNTING BOARD, 2 EA TERMINAL LUG 46A95M (28480)	EA	REF				*	*	*			2-1	L12
XDHZZ		COIL ASSEMBLY, RADIO FREQUENCY C12 7.562 IN LG X 0.8125 IN O/A C/O 7 EA COILS, 1 EA MOUNTING BOARD, 2 EA TERMINAL LUG 46A95H (28480)	EA	REF				*	*	*			2-1	L13
XDHZZ		COIL ASSEMBLY, RADIO FREQUENCY L13 7.562 IN LG X 0.8125 IN O/A C/O 7 EA COILS, 1 EA MOUNTING BOARD, 2 EA TERMINAL LUG 46A95M (28480)	EA	REF				*	*	*			2-1	L14
XDHZZ		COIL ASSEMBLY, RADIO FREQUENCY L14 7.562 IN LG X 0.8125 IN O/A C/O 7 EA COILS, 1 EA MOUNTING BOARD 2 EA TERMINAL LUG 46A95M (28480)	EA	REF				*	*	*			2-1	L15
XDHZZ		COIL ASSEMBLY, RADIO FREQUENCY L15 7.562 IN LG X 0.8125 IN O/A C/O 7 EA COILS, 1 EA MOUNTING BOARD, 2 EA TERMINAL LUG 46A95M (28480)	EA	REF				*	*	*			2-1	L16
XDHZZ		COIL ASSEMBLY, RADIO FREQUENCY L16 7.562 IN LG X 0.8125 IN O/A C/O 7 EA COILS, 1 EA MOUNTING BOARD, 2 EA TERMINAL LUG 46A95M (28480)	EA	REF				*	*	*			2-1	L17
XDHZZ		COIL ASSEMBLY, RADIO FREQUENCY L17 7.562 IN LG X 0.8125 IN D/A C/O 7 EA COILS, 1 EA MOUNTING BOARD, 2 EA TERMINAL LUG 46A95H (28480)	EA	REF				*	*	*			2-1	L18
XDHZZ		COIL ASSEMBLY, RADIO FREQUENCY L18 7.500 IN LG X 0.8125 IN W C/O 7 EA COILS, 1 EA MOUNTING, 2 TERMINAL LUGS 46A95A (28480)	EA	1				*	*	*			2-1	L19
XDHZZ		COIL ASSEMBLY, RADIO FREQUENCY L19 7.500 IN LG X 0.8125 IN W C/O 7 EA COILS, EA MOUNTING, 2 TERMINAL LUGS 46A95A (28480)	EA	REF				*	*	*			2-1	L20
XDHZZ		COIL ASSEMBLY, RADIO FREQUENCY L20 7.500 IN LG A 0.8125 IN W C/O 7 EA COILS, 1 EA MOUNTING, 2 TERMINAL LUGS 46A95A (28480)	EA	REF				*	*	*			2-1	L21
XDHZZ		COIL ASSEMBLY, RADIO FREQUENCY L21 7.500 IN LG X 0.8425 IN W C/O 7 EA COILS, 1 EA MOUNTING, 2 TERMINAL LUGS 46A95A (28480)	EA	REF				*	*	*			2-1	L22
XDHZZ		COIL ASSEMBLY, RADIO FREQUENCY L22 7.500 CONTINUED	EA	REF				*	*	*			2-1	L22

(1) SAR CODE	(2) FEDERAL STOCK NUMBER	(3) DESCRIPTION REFERENCE NUMBER & MFR CODE USABLE ON CODE	(4) UNIT OF MEAS	(5) QTY INC IN UNIT	(6) 30-DAY QS MAINT ALLOWANCE			(7) 30-DAY QS MAINT ALLOWANCE			(8) 1-YR ALN PER 100 EQUIP CATGCT	(9) DEPOT MAINT ALN PER 100 EQUIP	(10) ILLUSTRATION	
					(6a)	(6b)	(6c)	(7a)	(7b)	(7c)			(10a) FIGURE NO	(10b) ITEM NO
					1-20	21-50	51-100	1-20	21-50	51-100				
		CONTINUED												
XDHZZ		IN LG A 0.8125 IN W C/O 7 EA COILS, 1 EA MOUNTING, 2 TERMINAL LUGS 46A95A (28480)	EA	REF				*	*	*			2-1	L23
XDHZZ		COIL ASSEMBLY, RADIO FREQUENCY L23 7.500 IN LG A 0.8125 IN W C/O 7 EA COILS, 1 EA MOUNTING, 2 TERMINAL LUGS 46A95A (28480)	EA	REF				*	*	*			2-1	L24
XDHZZ		COIL ASSEMBLY, RADIO FREQUENCY L24 7.500 IN LG A 0.8125 IN W C/O 7 EA COILS, 1 EA MOUNTING, 2 TERMINAL LUGS 46A95A (28480)	EA	REF				*	*	*				
XDHZZ		SOCKET, ELECTRON TUBE 112-22-01-057 (71785) XV1 MIN TYPE.....	EA	REF				*	*	*				XV1
XDHZZ		SOCKET, ELECTRON TUBE 112-22-01-057 (71785) XV2 MIN TYPE.....	EA	REF				*	*	*				XV2
XDHZZ		SOCKET, ELECTRON TUBE 112-22-01-057 (71785) XV3 MIN TYPE.....	EA	REF				*	*	*				XV3
XDHZZ		SOCKET, ELECTRON TUBE 112-22-01-057 (71785) XV4 MIN TYPE.....	EA	REF				*	*	*				XV4
XDHZZ		SOCKET, ELECTRON TUBE 112-22-01-057 (71785) XV5 MIN TYPE.....	EA	REF				*	*	*				XV5
XDHZZ		SOCKET, ELECTRON TUBE 112-22-01-057 (71785) XV6 MIN TYPE.....	EA	REF				*	*	*				XV6
XDHZZ		SOCKET, ELECTRON TUBE 112-22-01-057 (71785) XV7 PIN TYPE.....	EA	REF				*	*	*				XV7
XDHZZ		SOCKET, ELECTRON TUBE 112-22-01-057 (71785) XV8 PIN TYPE.....	EA	REF				*	*	*				XV8
XDHZZ		SOCKET, ELECTRON TUBE 112-22-01-057 (71785) XV9 PIN TYPE.....	EA	REF				*	*	*				XV9
XDHZZ		SOCKET, ELECTRON TUBE 112-22-01-057 (71785) XV10 PIN TYPE.....	EA	REF				*	*	*				XV10
XDHZZ		SOCKET, ELECTRON TUBE 112-22-01-057 (71785) XV11 PIN TYPE.....	EA	REF				*	*	*				XV11
XDHZZ		SOCKET, ELECTRON TUBE 112-22-01-057 (71785) XV12 PIN TYPE.....	EA	REF				*	*	*				XV12
PAHZZ	5910-822-5683	CAPACITOR, FIXED, PAPER DIELECTRIC .01 UF PORM20PCT 1000 VDC CK63AH103H (81349) C1.....	EA	19				*	*	*	3		2-1	C1
PAHZZ	5910-822-5683	CAPACITOR, FIXED, PAPER DIELECTRIC .01 UF PORM20PCT 1000 VDC CK63AH103H (81349) C2.....	EA	REF				*	*	*	3		2-1	C2
PAHZZ	5910-822-5683	CAPACITOR, FIXED, PAPER DIELECTRIC .01 UF PORM20PCT 1000 VDC CK63AH103H (81349) C3.....	EA	REF				*	*	*	3		2-1	C3
PAHZZ	5910-822-5683	CAPACITOR, FIXED, PAPER DIELECTRIC .01 UF PORM20PCT 1000 VDC CK63AH103H (81349) C4.....	EA	REF				*	*	*	3		2-1	C4
PAHZZ	5905-765-8702	RESISTOR, FIXED, COMPOSITION R1 260 OHMS PORM1PCT 1W, OPTIMUM VALUE SELECTED AS REQUIRED, AVERAGE VALUE SHOWN RN70D280F (81349)	EA	2				*	*	*	3		2-1	R1

SECTION V

TM 11-6625-635-24P

(1) WAR CODE	(2) FEDERAL STOCK NUMBER	(3) DESCRIPTION REFERENCE NUMBER & MFR. CODE USABLE ON CODE	(4) UNIT OF MEAS.	(5) QTY INC IN UNIT	(6) 30-DAY QS MAINT ALLOWANCE			(7) 30-DAY QS MAINT ALLOWANCE			(8) P-R ALM PER EQUIP CATGCT	(9) DEPOT ALM PER EQUIP	(10) ILLUSTRATION	
					(a)	(b)	(c)	(a)	(b)	(c)			(a)	(b)
					1-20	21-50	51-100	1-20	21-50	51-100			FIGURE NO.	ITEM NO.
PAWZZ	5905-760-8702	RESISTOR, FIXED, COMPOSITION R10 200... OHMS PORMIPCT 1/8, OPTIMUM VALUE SELECTED AS REQUIRED, AVERAGE VALUE SHOWN RC20GF120K (81349)	EA	REF				*	*	*		3	2-1	R10
PAWZZ	5905-195-6455	RESISTOR, FIXED, COMPOSITION R2 12 OHMS. PORMIPCT 1/2 W RC20GF120K (81349)	EA	14				*	*	*		3	2-1	R2
PAWZZ	5915-195-6453	RESISTOR, FIXED, COMPOSITION R3 12 OHMS. PORMIPCT 1/2 W RC20GF120K (81349)	EA	REF				*	*	*		3	2-1	R3
PAWZZ	5905-195-6453	RESISTOR, FIXED, COMPOSITION R4 12 OHMS. PORMIPCT 1/2 W RC20GF120K (81349)	EA	REF				*	*	*		3	2-1	R4
PAWZZ	5905-195-6453	RESISTOR, FIXED, COMPOSITION R5 12 OHMS. PORMIPCT 1/2 W RC20GF120K (81349)	EA	REF				*	*	*		3	2-1	R5
PAWZZ	5905-195-6453	RESISTOR, FIXED, COMPOSITION R6 12 OHMS. PORMIPCT 1/2 W RC20GF120K (81349)	EA	REF				*	*	*		3	2-1	R6
PAWZZ	5905-195-6453	RESISTOR, FIXED, COMPOSITION R7 12 OHMS. PORMIPCT 1/2 W RC20GF120K (81349)	EA	REF				*	*	*		3	2-1	R7
PAWZZ	5905-1985-6443	RESISTOR, FIXED, COMPOSITION R11 12 OHMS PORMIPCT 1/2 W RC20GF120K (81349)	EA	REF				*	*	*		3	2-1	R11
PAWZZ	5905-198-6453	RESISTOR, FIXED, COMPOSITION R12 12 OHMS PORMIPCT 1/2 W RC20GF120K (81349)	EA	REF				*	*	*		3	2-1	R12
PAWZZ	5905-1965-6453	RESISTOR, FIXED, COMPOSITION R13 12 OHMS PORMIPCT 1/2 W RC20GF120K (81349)	EA	REF				*	*	*		3	2-1	R13
PAWZZ	5905-195-6453	RESISTOR, FIXED, COMPOSITION R14 12 OHMS PORMIPCT 1/2 W RC20GF120K (81349)	EA	REF				*	*	*		3	2-1	R14
PAWZZ	5905-195-6453	RESISTOR, FIXED, COMPOSITION R15 12 OHMS PORMIPCT 1/2 W RC20GF120K (81349)	EA	REF				*	*	*		3	2-1	R15
PAWZZ	5905-195-6453	RESISTOR, FIXED, COMPOSITION R16 12 OHMS PORMIPCT 1/2 W RC20GF120K (81349)	EA	REF				*	*	*		3	2-1	R16
PAWZZ	5905-195-6453	RESISTOR, FIXED, COMPOSITION R17 12 OHMS PORMIPCT 1/2 W RC20GF120K (81349)	EA	REF				*	*	*		3	2-1	R17
PAWZZ	5905-195-6453	RESISTOR, FIXED, COMPOSITION R18 12 OHMS PORMIPCT 1/2 W RC20GF120K (81349)	EA	REF				*	*	*		3	2-1	R18
XLWZZ		RESISTOR, FIXED, COMPOSITION R8 195 OHMS PORMIPCT 1/8 W RN55D1960 (81349)	EA	2				*	*	*			2-1	R8
XDWZZ		RESISTOR, FIXED, COMPOSITION R19 195.... OHMS PORMIPCT 1/8 W RN55D1960 (81349)	EA	REF				*	*	*			2-1	R19

(1) SMR CODE	(2) FEDERAL STOCK NUMBER	(3) DESCRIPTION REFERENCE NUMBER & MFR. CODE USABLE ON CODE		(4) UNIT OF MEAS	(5) QTY INC IN UNIT	(6) 30-DAY DS MAINT ALLOWANCE			(7) 30-DAY GS MAINT ALLOWANCE			(8) 1-YR ALW PER 100 EQUIP CNTGCT	(9) DEPOT MAINT ALW PER 100 EQUIP	(10) ILLUSTRATION	
						(a)	(b)	(c)	(a)	(b)	(c)			(a)	(b)
						1-20	21-50	51-100	1-20	21-50	51-100			FIGURE NO.	ITEM NO.
PAHZZ	5905-195-8453	RESISTOR, FIXED, COMPOSITION R9 5600.... OHMS PURMLOPCT 1/2 W RC20GF562K (81349)		EA	2				*	*	*		3	2-1	R9
PAHZZ	5905-195-6453	RESISTOR, FIXED, COMPOSITION R20 5600.... OHMS PURMLOPCT 1/2 W RC20GF562K (81349)		EA	REF				*	*	*		3	2-1	R20
MDDZZ		DECK ASSEMBLY NO-REF-DESIG P/O MAIN..... CHASIS 46A1 (28480)			1										
XDHZZ		TERMINAL BOARD NO-REF-DESIG 2 TIE POINTS 332-14-02-006 (71785)		EA	1				*	*	*				
PAHZZ	5940-063-8543	TERMINAL BOARD NO-REF-DESIG 5 TIE POINTS 332-14-05-035 (71785)		EA	1				*	*	*		3		
YDHZZ		TERMINAL BOARD NO-REF-DESIG 7 TIE POINTS 332-14-07-041 (71785)		EA	1				*	*	*				
PAHZZ	5340-222-8562	CLAMP, LOOP NO-REF-DESIG PLASTIC 1/4 IN DIA SECURES POWER CABLE TO CHASIS CPC742-4 (71616)		EA	1				*	*	*		3		
XBDZZ		SCREW, MACHINE NO-REF-DESIG NO 6-32 THD, 5/16 IN B.H. 2390-0007 (83330)		EA	9										
XBDZZ		WASHER, FLAT NO-REF-DESIG NO 6 SIZE 3/8. DIA 3050-0066 (73734)		EA	10										
PADZZ	5310-687-7337	NUT, HEXAGON NO-REF-DESIG NC 5-32 X 5/16 IN LG		EA	10								3		
XDHZZ		510-061810-01 (78181) CAPACITOR, FIXED, ELECTROLYTIC C9 3..... SECTIONS 40 X 30 X 20 UF, 150 VDCW PORMSPCT		EA	1				*	*	*			2-1	C9
PAHZZ	5950-947-3784	CE33C450J (81349) TRANSFORMER, POWER, STEP-DOWN AND STEP-UP. T1 115V, 60 CPS PRI 6.3V 1 SECTION, 120V 1 SECTION		EA	1				*	*	*		3	2-1	T1
XDDZZ		4160 (28480) REACTOR L25 RATED 6 H.....		EA	1									2-1	L25
PADZZ	5975-351-6114	9110-0017-1005 (28480) GRUMMET NO-REF-DESIG FOR POWER CABLE....		EA	1								5		
PAHZZ	5905-454-2875	SR5P1 (28520) RESISTOR, FIXED, COMPOSITION R23 18 OHMS PURMLOPCT 1W OPTIMUM VALUE SELECTED AS REQUIRED, AVERAGE VALUE SHOWN GB1801 (01121)		EA	1				*	*	*		3	2-1	R23
MDDZZ		PANEL NO-REF-DESIG RIGHT SIDE 6-3/8 IN.. LG X 4-7/16 IN H WITH 1/2 IN FLANGE 46A1A (28480)			1										
MDDZZ		PANEL NO-REF-DESIG LEFT SIDE 6-3/8 IN X. 4-7/16 IN. WITH 1/2 IN FLANGE 46A1A (28480)			1										
PADZZ	5305-021-7428	46A1A (28480) SCREW, MACHINE NO-REF-DESIG NO 8-32 X... 1/2 IN LG 2590-0003 (28480)		EA	4								5		

SECTION V

TM 11-6625-635-24P

(1) SAR CODE	(2) FEDERAL STOCK NUMBER	(3) DESCRIPTION REFERENCE NUMBER & MFR. CODE USABLE ON CODE		(4) UNIT OF MEAS	(5) QTY INC IN UNIT	(6) 30-DAY DS MAINT ALLOWANCE			(7) 30-DAY GS MAINT ALLOWANCE			(8) 1-R ALW PER 100 EQUIP CNTGCT	(9) DEPOT MAINT ALW PER 100 EQUIP	(10) ILLUSTRATION		
						(a)	(b)	(c)	(a)	(b)	(c)			(a)	(b)	
						1-20	21-50	51-100	1-20	21-50	51-100			FIGURE NO.	ITEM NO.	
XDZZ		NUT, HEXAGON NO-REF-DESIG 8-32 X 1 1/32..	EA	4												
PCZZ	5961-646-4611	MS3549-02 (96906) SEMICONDUCTOR DEVICE, DIODE CRI.....	EA	1				*	*	*		3	2-1	CRI		
XBZZ		IN457 (81349) SCREW, MACHINE NO-REF-DESIG 6-32 X 1/2..	EA	1												
		IN LG RHNS 2360-0010 (28480)														

**INDEX - FEDERAL STOCK NUMBER AND REFERENCE NUMBER
CROSS-REFERENCE TO FIGURE AND ITEM NUMBER**

STOCK NUMBER	FIGURE NO.	ITEM NO.	STOCK NUMBER	FIGURE NO.	ITEM NO.
5305-821-7428			5910-822-5683	2-1	C2
5310-454-1335			5910-822-5683	2-1	C3
5910-627-7557			5910-822-5683	2-1	C4
5330-582-3319			5910-204-7734	2-1	F1
5340-222-8862			5910-801-4636		XFI
5505-195-6453	2-1	R11	5930-231-1451		
5905-195-6453	2-1	R12	5930-729-8375	2-1	S1
5905-195-6453	2-1	R13	5935-331-1482	2-1	J1
5905-195-4653	2-1	R14	5935-331-1482	2-1	J2
5905-195-6453	2-1	R15	5940-063-8543		
5905-195-6453	2-1	R16	5950-947-3704	2-1	T1
5905-195-4653	2-1	R17	5560-262-1357	2-1	W10
5905-195-6453	2-1	R18	5560-262-1357	2-1	W11
5905-195-4653	2-1	R20	5560-262-1357	2-1	W12
5905-195-6453	2-1	R21	5560-262-1357	2-1	V1
5905-195-6453	2-1	R23	5560-262-1357	2-1	V2
5905-195-6453	2-1	R4	5560-262-1357	2-1	V3
5905-195-6453	2-1	R5	5560-262-1357	2-1	V4
5905-195-4653	2-1	R6	5560-262-1357	2-1	V5
5905-195-6453	2-1	R7	5560-262-1357	2-1	V6
5905-195-6453	2-1	R9	5560-262-1357	2-1	V7
5905-454-2875	2-1	R23	5560-262-1357	2-1	V8
5905-660-6445	2-1	R22	5560-262-1357	2-1	V9
5905-765-8702	2-1	R10	5561-646-4611	2-1	CR1
5905-765-8702	2-1	R1	5975-351-6114		
5905-912-5314	2-1	R19	5995-921-3280		W1
5905-912-5314	2-1	R8	6210-729-9081		
5910-822-5683	2-1	C1	6240-617-1468	2-1	I1

REFERENCE N O .	MFR CODE	FIG. NO.	ITEM NO.	REFERENCE N O .	MFR CODE	FIG. NO.	ITEM NO.
AN515C6R4	83044			RC20GF120K	81349	2-1	R3
AN936A6B	53044			RC20GF120K	81349	2-1	R4
CB33C450J	81349	2-1	C9	RC20GF120K	81349	2-1	R5
CX3AN103M	81349	2-1	C1	RC20GF120K	81349	2-1	R6
CK63AN103M	81349	2-1	C2	RC20GF120K	81349	2-1	R7
CN63AN103M	81349	2-1	C3	RC20GF120K	81349	2-1	R11
CK63AN103M	81349	2-1	C4	RC20GF120K	81349	2-1	R12
CPC742-4	71616			RC20GF120K	81349	2-1	R13
EZ8X1-2	73734			RC20GF120K	81349	2-1	R14
CB1801	01121	2-1	R23	RC20GF120K	81349	2-1	R15
JC1805-873	78553			RC20GF120K	81349	2-1	R16
IH4096	70903		W1	RC20GF120K	81349	2-1	R17
MS35649-82	96906			RC20GF120K	81349	2-1	R18
RA30NASD500A	81349	2-1	R22	RC20GF562K	81349	2-1	R9
RC20GF120K	81349	2-1	R2	RC20GR562K	81349	2-1	R20

SECTION VII

TM 11-6625-635-24P

REFERENCE NO.	MFR CODE	FIG. NO.	ITEM NO.	REFERENCE NO.	MFR CODE	FIG. NO.	ITEM NO.
RN02011-000	81349	2-1	R8		28480		
RN02011-000	81349	2-1	R19		28480		
RN02011-000F	81349	2-1	R1		28480		
RN02011-000F	81349	2-1	R10	46A76	28480	2-1	J1
SACPL	28520			46A76	28480	2-1	J2
USAO-0002	28480			46A764A1	28480		
IN457	81349	2-1	CRL	46A95A	28480	2-1	L18
112-22-01-057	71785		XV1	46A95A	28480	2-1	L19
112-22-01-057	71785		XV2	46A95A	28480	2-1	L20
12-22-01-057	71785		XV3	46A95A	28480	2-1	L21
112-22-01-057	71785		XV4	46A95A	28480	2-1	L22
112-22-01-057	71785		XV5	46A95A	28480	2-1	L23
112-22-01-057	71785		XV6	46A95A	28480	2-1	L24
112-22-01-057	71785		XV7	46A95L	28480	2-1	L1
112-22-01-057	71785		XV8	46A95L	28480	2-1	L2
112-22-01-057	71785		XV9	46A95L	28480	2-1	L3
112-22-01-057	71785		XV10	46A95L	28480	2-1	L4
112-2-01-057	71785		XV11	46A95L	28480	2-1	L5
112-22-01-057	71785		XV12	46A95M	28480	2-1	L11
12	24446	2-1	I1	46A95M	28480	2-1	L12
14L113	72765			46A95M	28480	2-1	L13
2020AE	72765		X11	46A95M	28480	2-1	L14
20994HN	04039			46A95M	28480	2-1	L15
2190-0009	28480			46A95M	28480	2-1	L16
2360-0007	81053			46A95M	28480	2-1	L17
2360-0018	28480			46A95N	28480	2-1	L6
2390-0007	83330			46A95N	28480	2-1	L7
2590-0002	70276			46A95N	28480	2-1	L8
2590-0003	28480			46A95N	28480	2-1	L9
2950-0035	28480			46A95N	28480	2-1	L10
3050-0023	28480			510-061810-01	78181		
3050-0066	73734			5910-061810-01	78189		
3050-0071	28480			5654-6AK5W	81349	2-1	V1
313-600	75915	2-1	F1	5654-6AK5W	81349	2-1	V2
332-11-02-002	71785			5654-6AK5W	81349	2-1	V3
32-14-02-006	71785			5654-6AK5W	81349	2-1	V4
332-14-03-011	71785			5654-6AK5W	81349	2-1	V5
332-14-05-035	71785			5654-6AK5W	81349	2-1	V6
332-14-07-041	71785			5654-6AK5W	81349	2-1	V7
342014	75915		XF1	5654-6AK5W	81349	2-1	V8
4160	28480	2-1	T1	5654-6AK5W	81349	2-1	V9
46A1	28480			5654-6AK5W	81349	2-1	V10
46A1AL	28480			5654-6AK5W	81349	2-1	V11
46A1AR	28480			5654-6AK5W	81349	2-1	V12
46A1C	28480			80994H	04009	2-1	S1
46A2	28480			901-2	75915		
46A4	28480			903-12	75915		
46A47	28480			9110-0017-1005	28480	2-1	L25

By Order of the Secretary of the Army:

Official:

VERNE L. BOWERS

Major General, United States Army

The Adjutant General

FRED C. WEYAND

General, United States Army

Chief of Staff

Distribution:

To be distributed in accordance with DA Form 12-51, organizational maintenance requirements for **AN/GRC-106**, AN/TRG-90, and AN/TRC-129.

✻ U.S. GOVERNMENT PRINTING OFFICE: 1975-665139/690

DEPARTMENT OF THE ARMY
US ARMY AG PUBLICATIONS CENTER
1655 WOODSON ROAD
ST. LOUIS, MISSOURI 63114

OFFICIAL BUSINESS
PENALTY FOR PRIVATE USE \$300

POSTAGE AND FEES PAID
DEPARTMENT OF THE ARMY
DOD 314



END

01-07-83

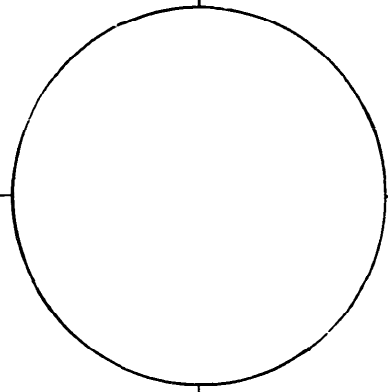
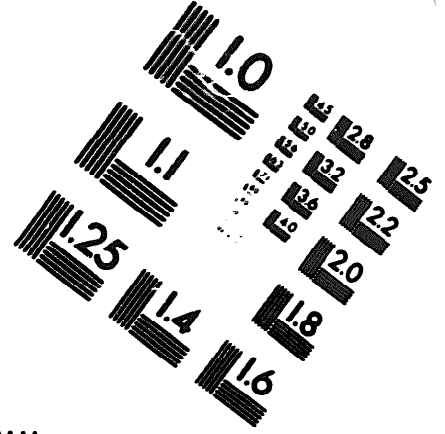
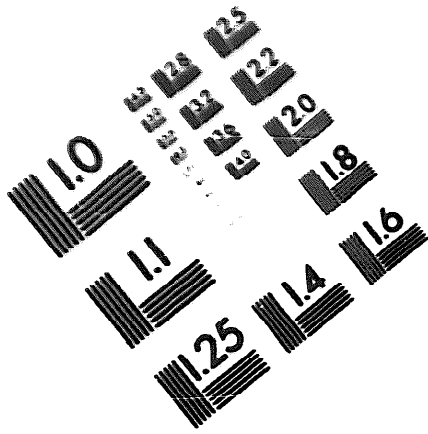
DATE





DEPARTMENT OF THE ARMY

MICROFORM
TEST TARGET



150 MM

1.0 mm (e= 81 mm)

ABCDEFGHIJKLMN OPQRSTU VWXYZ1234567890
abcdefghijklmnopqrstuvwxyz\$%&/'%# 1/2 1/4 3/4 —+ x&@*

1.5 mm (e= 1.09 mm)

ABCDEFGHIJKLMN OPQRSTU VWXYZ1234567890
abcdefghijklmnopqrstuvwxyz\$%&/'%# 1/2 1/4 3/4 —+ x&@*

2.0 mm (e= 1.37 mm)

ABCDEFGHIJKLMN OPQRSTU VWXYZ
abcdefghijklmnopqrstuvwxyz
1234567890\$%&/'%# 1/2 1/4 3/4 —+ x&@*

2.5 mm (e= 1.77 mm)

ABCDEFGHIJKLMN OPQRSTU VWXYZ
abcdefghijklmnopqrstuvwxyz
1234567890\$%&/'%# 1/2 1/4 3/4 —+ x&@*

1.0 mm (e= 81 mm)

ABCDEFGHIJKLMN OPQRSTU VWXYZ1234567890
abcdefghijklmnopqrstuvwxyz\$%&/'%# 1/2 1/4 3/4 —+ x&@*

1.5 mm (e= 1.09 mm)

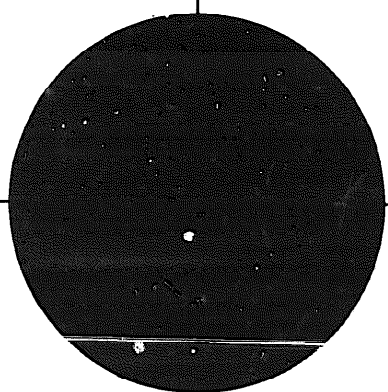
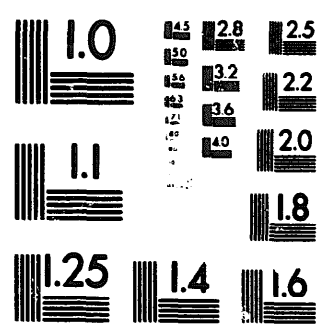
ABCDEFGHIJKLMN OPQRSTU VWXYZ1234567890
abcdefghijklmnopqrstuvwxyz\$%&/'%# 1/2 1/4 3/4 —+ x&@*

2.0 mm (e= 1.37 mm)

ABCDEFGHIJKLMN OPQRSTU VWXYZ
abcdefghijklmnopqrstuvwxyz
1234567890\$%&/'%# 1/2 1/4 3/4 —+ x&@*

2.5 mm (e= 1.77 mm)

ABCDEFGHIJKLMN OPQRSTU VWXYZ
abcdefghijklmnopqrstuvwxyz
1234567890\$%&/'%# 1/2 1/4 3/4 —+ x&@*



200 MM

250 MM

